

CARRIAGE GLOBAL (S) PTE LTD

COMPANY PROFILE



ABOUT US:

CGS AND PARTNERS PROVIDE INTEGRATED CUSTOMISED LOGISTICS SERVICES BY MANAGING AND OPTIMISING SUPPLY CHAINS FOR LEADING OIL AND GAS COMPANIES, OFFSHORE VESSELS ,HEAVY LIFT COMPANIES, ENERGY SECTOR, CONSTRUCTION AND MINING ETC. WITH A STRONG FOCUS ON COMPLIANCE, QUALITY, HEALTH, SAFETY AND THE ENVIRONMENT, WE PRIDE OURSELVES IN ATTAINING EXCELLENCE IN THESE AREAS.

OUR SERVICES



PROJECTS

- PROJECT CARGO MOVEMENTS
- WORLDWIDE CONTAINERISED SEAFREIGHT SHIPMENTS
- AIR SHIPMENTS

CHARTERING

- MARKETING AGENTS FOR HANSSY SHIPPING HAVING 60 TONS TO 800 TONS LIFTING CAPACITY HEAVY LIFT VESSELS SAILING FROM JAPAN, KOREA, CHINA TO INTRA ASIA AND MIDDLE EAST
- FLAT TOP, RORO, LCT, TUG AND BARGE CHARTERING

SUPPORT ACTIVITIES

- SUPPLY OF SUITABLE LIFTING EQUIPMENT
- SECOND HAND CONTAINER SALES
- USED CAR EXPORTS



OUR SERVICES

- **PROJECT CARGO, OVERSIZE, CRITICAL, TIME SENSITIVE, HEAVY LIFT MOBILIZATION AND DEMOBILIZATION.**
- **CHARTERING OF HEAVY LIFT VESSELS, GEARLESS, SEMI GEARED VESSELS, LCT, TUG AND BARGE CHARTERING UNDER FLT, FIO, FILO, LIFO TERMS.**
- **CROSS BORDER TRUCKING FROM SINGAPORE TO THAILAND SONGKHLA, SATTAHIP, KEMAMAN SUPPLY BASE IN MALAYSIA, PORT KLANG, PASIR GUDANG TO AND FROM.**
- **STUFFING, DE STUFFING, WAREHOUSING FOR SHORT AND LONG TERM, OPEN AND COVER WAREHOUSE, 4PL LOGISTIC.**
- **LASHING, DUNNAGES, LIFTING, SHRINK WRAPPING, PALLETIZING AND CRATING OF OVERSIZE AND GENERAL CARGO.**
- **LOADING ON MAFI ON FULL LINTER TERMS, FLAT RACK, OPEN TOP, 45 FEET OPEN TOP ETC DEPENDS UPON PROJECT REQUIREMENT AND TIME LINE.**



OUR SERVICES

- **LESS THAN CONTAINER LOAD, AIR FREIGHT FROM ALL ASIAN REGIONS TO WORLDWIDE ON DOOR TO AIRPORT BASIS FOR MEDICAL EQUIPMENT, OIL AND GAS, OFFSHORE EQUIPMENT, GENERAL CARGO ETC.**
- **HIRING OF FLOATING CRANE, HEAVY LIFT CRANE, MODULAR TRAILERS, LOW BED TRAILERS, U BED TRAILERS, EXTENDABLE FLATBED TRAILERS, SUPER LOW BED TRAILERS WITH HEIGHT FROM GROUND 0.65M**
- **DOOR TO DOOR DELIVERY CARGO TO MALAYSIA, INDONESIA IFROM SINGAORE, MALAYSIA ON TEMPORARY AND NORMAL IMPORT BASIS, DELIVERING ON MORE THAN REGULAR BASIS TO MALAYSIA AND INDONESIA.**

OFFICES



2007

SINGAPORE

- CARRIAGE GLOBAL (S) PTE LTD
- 21 Bukit Batok Crescent
WCEGA Tower Hex 17-82
Singapore 658065
- PTC: Mrs Angeline Tilokani
- Phone: +65 65156106
- Fax: +65 64725443
- Mobile: +65 90073954
- EMAIL:
angeline@carriageglobal.com

2015

BRUNEI

- INFORMA SDN BHD
- No. 25, spg 96, Kg Madang
Berakas, Bandar Seri
Bagawan,
Negara Brunei Darussalam.
- PTC:- Mrs Sharun
- Phone: + 673 864 464
- EMAIL:
admin@carriageglobal.com

2017

MALAYSIA

- CARRIAGE GLOBAL SDN BHD
- 21 Suite 28.02, 28th Floor,
Menara Zurich No.15, Jalan
Dato Abdullah Tahir, Johor
Bahru, Johor
- PTC: Mr Sanket S. Desai
- Mobile: +91 96199747573
- EMAIL:
sanket@carriageglobal.com

OUR NETWORK



CGS IS MEMBER OF WCA PROJECT NETWORK (WORLD CARGO ALLIANCE) SINCE 2011 AND OPCA (OVERSEAS PROJECT CARGO ASSOCIATION). WITH THIS NETWORK WE HAVE RELIABLE AND EXPERIENCE PROJECT FREIGHT FORWARDERS AROUND THE WORLD, MOST OF THEM ARE ASSET BASED COMPANIES. WE HAVE DELIVERED VARIOUS CROSS BORDER PROJECTS WITH THE HELP OF OUR TRUSTED AND VERIFIED AGENTS. ALL OF THESE AGENTS ARE OUR INTANGIBLE ASSET.

SOCIAL MEDIA



- VISIT US ON OUR WEBPAGE AT [HTTP://CARRIAGEGLOBAL.COM](http://CARRIAGEGLOBAL.COM)
- ON YOUTUBE [HTTPS://WWW.YOUTUBE.COM/WATCH?V=MJRELBUDHZS](https://www.youtube.com/watch?v=MJRELBUDHZS)
- ON FACEBOOK : [HTTPS://WWW.FACEBOOK.COM/CARRIAGEGLOBAL](https://www.facebook.com/CARRIAGEGLOBAL)
- FOLLOW US ON LINKED IN: [HTTPS://WWW.LINKEDIN.COM/COMPANY/2036777/ADMIN](https://www.linkedin.com/company/2036777/admin)



PROJECT CARGO

- **WE PROVIDE CUSTOMIZED LIFTING AND TRANSPORT SOLUTIONS TO OUR CUSTOMERS WHO REQUIRE INTERNATIONAL OR INTEGRATED END-TO-END ONSHORE OR OFFSHORE LIFTING AND TRANSPORTATION SEA AND LAND SERVICES OF LARGE, HEAVY, HIGH VALUE OR A CRITICAL CARGO. OUR EXPERIENCED PROJECT MANAGER HAVE SUCCESSFULLY SOURCED FOR COST EFFECTIVE AND SUITABLE EQUIPMENT, VESSEL, TUG AND BARGE, LCT TO TRANSPORT VARIOUS TYPES OF CARGO FOR DIFFERENT INDUSTRIES. PROJECT CARGO REQUIRES A DETAILED ENGINEERING PROCESS IN ORDER TO STAY WITHIN THE PROJECTED BUDGET AND BE COMPLETED ON TIME.**
- **WE CHARTER SUITABLE HEAVY LIFT VESSEL, SEMI GEARED VESSEL, GEARLESS VESSEL CONSIDERING PROJECT REQUIREMENT, DRAFT LEVEL, LOA RESTRICTIONS, SITE FEASIBILITY.**



PROJECT CARGO

- HIRE FLOATING PONTOON IN CASE OF DRAFT RESTRICTIONS TO LOAD AND DISCHARGE OVERSIZE AND HEAVY LIFT CARGO.
- HIRING OF 500T TO 800T FLOATING CRANE FOR BUOY TESTING, LIFTING OF KNUCKLE CRANE TO INSTALL ON OFFSHORE VESSELS, HATCH COVER.
- DOOR TO DOOR SOLUTION OF PROJECT CARGO, OVERSIZE AND HEAVY LIFT SHIPMENTS.
- WE HAVE CHARTERED 100S OF HEAVY LIFT VESSEL TO SHIP OIL AND GAS CARGO, HEAVY LIFT CRANES SUCH AS CC8800,CC6800,CC2800, LR 1750 SCX1000 ETC FOR OUR TRUSTED CLIENTS AND PARTNERS.



PROJECT CARGO

- IN SUPPORT OF THE VARIETY OF PROJECTS, WE ARE EQUIPPED WITH A WIDE SELECTION OF TRAILER TYPES AND LENGTHS TO CATER TO DIFFERENT CARGOES' WEIGHT AND SIZE FOR DELIVERY TO ANY DESIGNATED LOCATION IN SINGAPORE, MALAYSIA, INDONESIA, THAILAND, BRUNEI, VIETNAM, CHINA.
- IN TERMS OF TRANSPORTATION, WE ARE VERSATILE AND ABLE TO HANDLE FROM OVER-HEIGHT OVER-WIDTH CARGO TO CARTON-SIZE AND SPARE-PART DELIVERIES.
- THE CARGO PREPARATION WORKS, THE COORDINATION FOR POLICE ESCORTS AND/OR THE COORDINATION WITH CUSTOMERS TO MEET JUST-IN-TIME (JIT) EFFICIENCIES ARE COMMON.
- OVER THE YEARS, OUR TEAM HAS GAINED A LOT OF EXPERIENCE SUPPORTING PROJECT LOGISTICS.

STEVEDORING AND SUPPLY OF LIFTING GEARS



- WE TAKE PRIDE IN PROVIDING HOOKING ON AND OFF SERVICE, WELDERS, NON WELDERS, GENERAL CREW FOR CABLE LAYING VESSELS AT COMPETITIVE RATE.
- WE ARE RENTING FOR ONE LIFT OR FOR SHORT TIME PERIOD LIFTING GEARS SUCH HAS SHACKLES, CHAINS, WEB SLINGS, HOOKS, BLOCKS, SPREADER BARS, ALL ARE MINISTRY OF MAN POWER CERTIFIED AND VALIDATED.



TUG & BARGE

- WE CHARTER TUGS AND BARGES OF VARIOUS SIZES AVAILABLE FOR SHORT TERM OR LONG TERM CHARTER. WE PROVIDE COMPLETE SOLUTION FROM THE TIME CARGO DISCHARGE ON TUG AND BARGE TILL OFFLOADING ON TO OFFSHORE VESSEL OR DELIVERING TO PRIVATE JETTIES WITHIN SINGAPORE, MALAYSIA, BATAM, BRUNEI.
- WE HAVE CHARTERED SEVERAL TIMES LCT, TUG AND BARGE OF DIFFERENT SIZES IN BALIKAPPAN, BONTANG FOR CONSTRUCTION AND EARTH MOVING MACHINERIES TO HEAVY LIFT VESSEL AT ANCHORAGE IN BALIKPAPAN, TOWING OF BOATS, CATAMARANS, YATCH TO THE PORT AND ANCHORAGE USING SUITABLE TUG.
- FABRICATION OF EYE PADS, LASHING, UNLASHING, STEVEDORING, HOOKING ON AND OFF AT ANCHORAGE AND PORT, CLEARING OF DECK ETC.
- ON BARGE, WE PROVIDE SOLUTION ON FIO, FLT, LIFO, FILO TERMS.



LIGHTER (BUM BOAT) SERVICES

- WE DELIVER CARGO TO ANCHORAGE WITHIN SINGAPORE AND MALAYSIAN WATERS.
- SINGAPORE EASTERN ANCHORAGE
- WESTERN ANCHORAGE
- EASTERN AND WESTERN BUNKERING (EBB AND EBA)
- RAFFLES ANCHORAGE (RRA)
- SUDONG ANCHORAGE (SUDONG).
- PROVIDING FULL LOGISTIC SOLUTION ALONG WITH LIGHTER SERVICE AT ANCHORAGE



CONTAINER SOLUTION

- **CARRIAGE GLOBAL IS STAFFED WITH PROFESSIONAL PEOPLE AND OPERATION PERSONNEL WHO ARE FOCUSED ON MEETING OUR CLIENTS' REQUIREMENTS INCLUDING AUXILIARY SERVICES SUCH AS PERMIT DECLARATION AND ARRANGEMENTS FOR CARGO FUMIGATION, CUSTOMIZE PACKAGING, SHRINK WRAP PACKAGING ETC.**
- **WE DEPLOY A MODERN VEHICLE FLEET WITH SERVICES WHICH CAN BE INTEGRATED WITH OUR THIRD PARTY WAREHOUSING SOLUTIONS TO OFFER A TOTAL 4PL LOGISTIC SERVICE.**
- **WAREHOUSE SUPPORT SERVICES INCLUDING: STUFFING AND UNSTUFFING OF CONTAINERS**
- **(RE)PACKING AND LABELLING OF CARGO**
- **TRANSHIPMENT AND TRANS LOADING IN OUTSIDE AND INSIDE FREEZONE.**

OUR TRACK RECORD



Hose Reel

*Shipment from Ex works
Singapore Yard on Barge using
Jack down system to Poland.*



Essar Offshore

*From Ex works Two suppliers yard in
Singapore to Kakinada under hook.
Around 3500 freight ton heavy lift cargo.*



OUR TRACK RECORD

Leighton offshore On Mv Atlant Svenja

Dalian and Huangpu to Tanzania Buoy 365ton along with lifting accessories, Heavy lift Transformers , total 8500 freight ton. Water to Water terms.



Commodity:- Diving System

From Ex works Loyang offshore supply base to Mumbai port.



OUR TRACK RECORD

Commodity:- Land Rig total Two rigs volume 18500 freight ton

From Jebel ali port to Sohar in Oman.



Client : Macgregor/Chr th boe

Receiving under hook on barge and installing at MMA offshore using 500t lifting gear. Appointed surveyor, lashing team, mom inspection on lifting gears etc.



OUR TRACK RECORD

**Shipment from Ex Kakinada to
Conoco philip Island in Matak.**

*Transshipment via Singapore, Oil Rig
6500 freight ton*



**Shipment from Ex Bintulu and Kota Kinabalu
Punj lloyd yard to Jebel ali .**

*15 units of Cat 587, 583 and 475 Pipelayers
along with accessories*



OUR TRACK RECORD

Shipment:- Shanghai to Dammam

Total 3900 freight ton, heaviest 220 ton each drum



Shipment from Bauan, Batangas to Batam port, DDP terms.

Total 1500 freight ton of Modular trailers and accessories



OUR TRACK RECORD

Client Sarens Belgium

Shipment from Goro and Pappette / Koniambo mines to Singapore and from Singapore to Various locations. Volume 6500 freight ton



Mobilization and Demobilization.

Shipment from Singapore to Kemmaman supply base, Door to door delivery Under temporary export, including clearance at both ends.



OUR TRACK RECORD

Shipment from Kabil port in Batam to Flushing,

Last in First out basis, Hammers, fenders and Winches Total 8500 freight ton approximately. Heavy lift 450 tons



Model CC8800

Shipment from Singapore to Batangas port Bauan



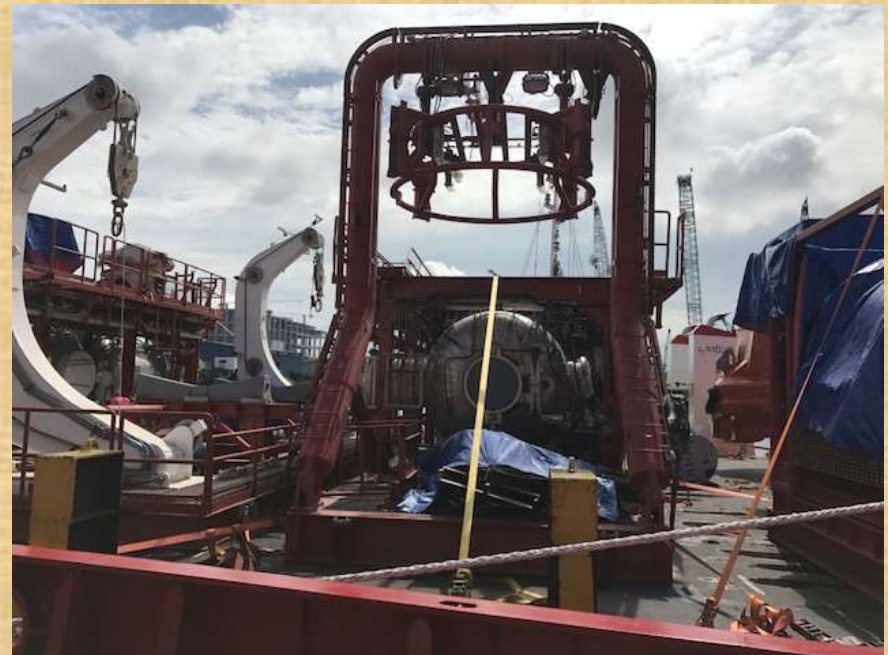
OUR TRACK RECORD

Shipment from Tanjung Langsat to Mokpo Korea Heavy lift reels.

Various other shipments for same client to world wide ports.



Shipment from Johor port to MMA offshore, 2300 + freight ton of cargo, All heavy lift and OOG.





THANK YOU